

PART 4

Appendix

The appendix contains important information for the Watchdog and is split into three sections.

APPENDIX..... PGS. 62-67

Section 1: Communication Error Screen pg. 62

Section 2: Troubleshooting/Error Codes..... pg.64

Section 3: Formatting SD Cardpgs. 65-66

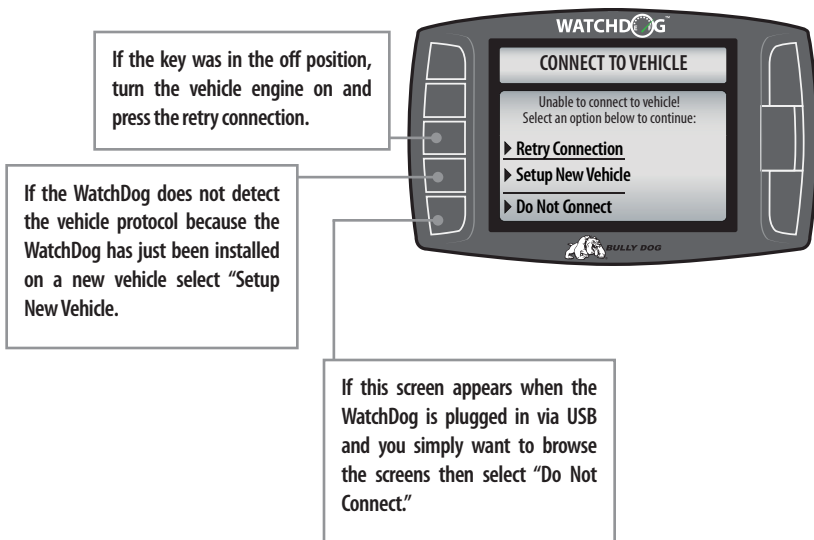
Section 4: Performance Testing Analysis Software.....pgs. 67

SECTION 1: Communication Error Screen

The Communication Error Screen illustrated in the diagram below appears when the WatchDog is unable to establish communication with the vehicle. See the instructions below to trouble shoot the potential causes and what can be done.

REASONS WHY THIS SCREEN APPEARS:

1. The WatchDog may not be correctly plugged into the vehicle OBD II block.
2. The WatchDog cannot communicate with most vehicles unless the engine is running and any other vehicle must have the key in the ON position.
3. If the WatchDog is transferred to a new vehicle then this screen will appear because the WatchDog is looking for information on the previous vehicle.



SECTION 2: Watchdog Troubleshooting/error codes

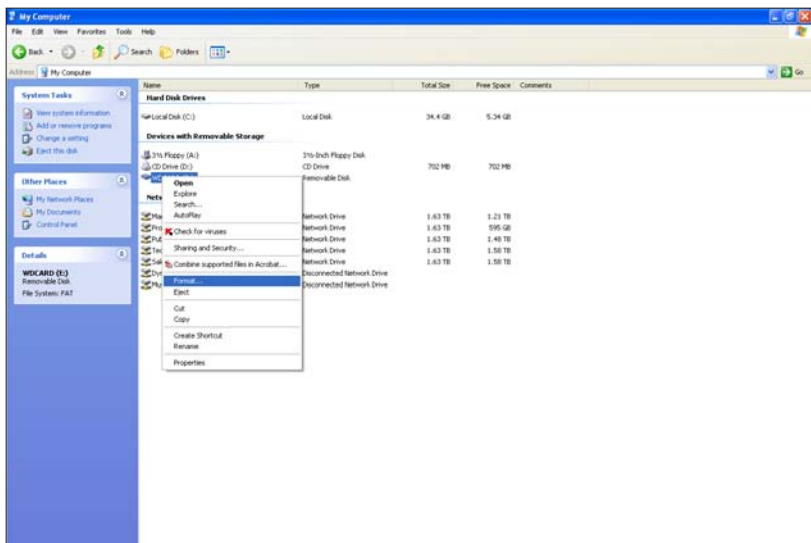
CONDITION	POSSIBLE SOURCES	ACTION
Watchdog will not turn on	Installation/ Connections	Make sure that the fuse jack is securely fastened to the fuse socket.
		Check that the fuse is working properly.
		Make sure that all of the harnesses are properly installed. If still not working, one of the harnesses could be defective.
Back light quit working	Loose Connections	Contact Technical Support if the Watchdog is otherwise functioning normal.

For more information on up-to-date troubleshooting guide for the Watchdog, go to www.bullydog.com and or contact our technical support team.

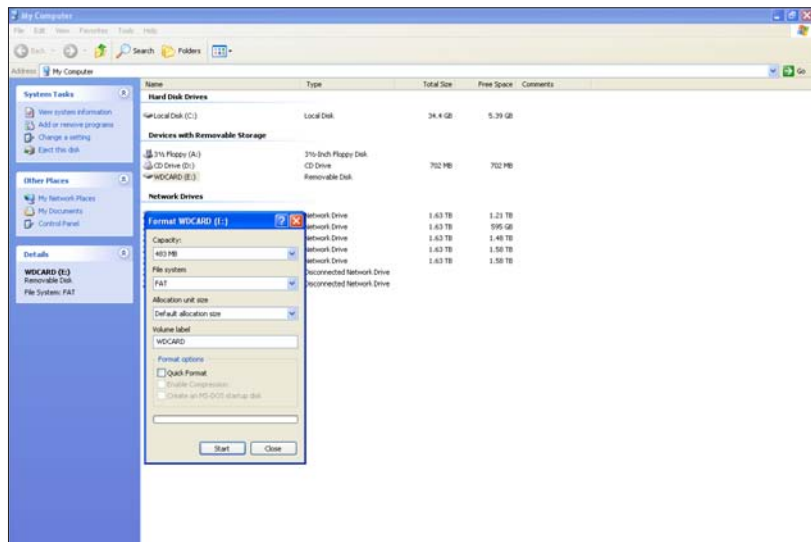
SECTION 3: Formatting a new Micro SD card

In case an SD Card is lost or broken, a new micro SD Card can be purchased and used to update the Watchdog. However, the new card will need to be formatted to work with our internet update software, The Update Agent. The reason a new SD card needs to be formatted is so that the Update Agent will automatically recognize that SD Card when the SD card is plugged into a PC. Below are steps and diagrams showing how to format a new SD Card:

1. Plug the SD Card into a PC via the USB to SD Card Reader.
2. Open the My Computer function in Microsoft windows to see all of the devices and drives on that PC. Find the new SD Card in the list under the heading, "Devices with removable storage."
3. Right click on the SD Card to show a drop down menu of options. In the drop down menu click on Format.



4. With the formatting dialog box open click the drop down men for “File System.” Highlight and click on FAT.
5. Then change the Volume Label to read “WDCARD,” by typing it into the dialog box below that title.
- 6 Click “Start” to reformat the card with the new information.
7. After the reformat process is complete you can place a call or go onto our online chat option to contact a technical support associate who can get you the correct files.



8. Now unplug the card reader and plug it back into the PC and the Update Agent should recognize this SD Card.

Now whenever this card is plugged into any PC that has the Bully Dog Update Agent installed the Agent will automatically recognize the SD Card.

SECTION 4: Performance Testing Analysis Software

If you are a drag racer using the WatchDog for on track use then you must check out the Performance Testing Analysis Software. This free software package takes all of the performance testing runs that have been collected on the SD card and makes them viewable on your PC. Go to our website and download the software free of charge and start using it right away. The diagram below shows just a small example of what the software can do.

SOFTWARE CAPABILITIES:

- Display Speed, RPM, Estimated Horsepower, and Estimated Torque during runs plotted on a histogram.
- Overlay multiple runs to cross compare two different recorded runs.
- Print out time slips that display all the information displayed on an official time slip, also create images that can be emailed.
- Export horsepower and Torque graphs into images that can be saved, printed and even emailed.
- Export raw data into excel.



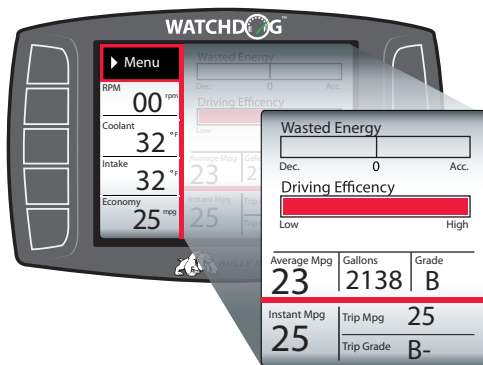


BULLY DOG

#1 IN PERFORMANCE

The Watchdog featuring **The Driving Coach**

Check out the interactive Driving Coach displayed below. The Driving Coach Software is a specialized program designed to make you a more efficient and safer driver. You might be surprised to hear that aggressive drivers can save upwards of 37%* on their fuel consumption by adopting better driving habits. So ask your self if your lead foot could use a little improvement. You might save more than you think using the Driving Coach.



- View Wasted Energy Indicator
- Monitor Your Driving Efficiency
- Display Average Economy
- Display Trip Economy
- Display Gallons Used
- Display Instant Economy
- Set Your Own Economy Goal
- Choose your Sensitivity Level

The WatchDog works with most '96 & newer vehicles

Special Note: The WatchDog relies primarily on gathering vehicle information through the OBD II port. Earlier model year vehicles generally do not display as much information as newer model vehicles. Technology advances in later model vehicles have brought more vehicle sensors and so they are able to broadcast more information to the vehicle OBD II port. The more information that is displayed over the vehicle communication lines and to the OBD II port, the more information that the WatchDog is able to display.

*Source: Edmunds.com, The Edmunds.com study results cited above have no relation to any studies performed using the WatchDog. Bully Dog and Edmunds.com share no affiliation.